

# The wait is over!

## Benchmark Builders opens new model home at The Town of Whitehall.



The 4-bedroom Edmonston model home opens today for a special preview at The Town of Whitehall.

**T**ucked along the south bank of the C&D Canal, construction of a new, contemporary approach to small-town values is coming to life in the form of The Town of Whitehall. Now, you'll have the opportunity to experience Benchmark Builders' interpretation of hometown living with the opening of the newly completed, fully furnished Edmonston model, a 4-bedroom home with a unique combination of charm and sophistication.

The Edmonston is just one of many designs that Benchmark Builders is offering. Their portfolio of single-family, 3- and 4-bedroom homes is extensive; each model inspired by traditional architectural values prominent in such historic Delaware towns as Old New Castle, Odessa and the state capital of Dover. This all-new concept is something of a departure for the award-winning local builder. Of course, that should come as no surprise considering the Town of Whitehall is a dramatic departure from what is currently available in the marketplace.

Regardless of the model, one can't help but be impressed with the thoroughly modern floor plans that feature an airy open-concept design where the kitchen, breakfast area and

family room come together as one impressive great room. Reflecting buyers' preferences, such features as a downstairs owner's bedroom suite, a large screened or wrap-around porch, spacious bathrooms, private study/home office spaces, as well as 2-car rear-entry attached and detached garages are present and accounted for. Energy efficiency is also in the forefront of each model. A cutting-edge gas direct-vent heating system, large double-pane Andersen insulated windows, an extensive insulation package, James Hardie siding and gas hot-water heater top the list. Pricing starts at \$365,900.

Created to preserve and facilitate the small-town virtues often lost in the hectic pace of our 24/7 world, The Town of Whitehall is a return to the tree-lined streets, quiet parks and a town square where folks can gather for concerts and other activities. It's an immensely walkable town that mixes neighborhoods, shopping areas and dedicated open spaces into one harmonious community where kids can play in the numerous village greens or ride their bikes on quiet streets and trails.

### About the Edmonston Model Home:

Visitors anxious to discover what many have been talking about are invited to tour the Edmonston model home. Available with either 3 or 4 bedrooms, this design is the perfect example of how to marry form and function with

*Continued to page 2*

*Continued from page 1*

flexibility and roominess. It starts with a long list of standard features such as Corian® countertops, 42" maple recessed-panel kitchen cabinets, hardwood flooring in the kitchen and foyer, and continues with myriad choices throughout, all geared to fulfill the wishes of the homebuyer.

The open-concept floor plan creates a dramatic living space that brings the gourmet-friendly kitchen, breakfast area and family room together to create the heart of the home. A formal dining room and a private first-floor study are present and accounted for, and the added convenience of a first-floor owner's bedroom suite makes this home especially appealing to those who prefer the convenience of single-level living. Lined with large windows, natural light is a welcomed guest throughout the home.

Upstairs, there are numerous choices that prove the flexibility of the design. Besides a spacious bath, there are numerous possibilities, including a loft, extra storage space, an extra bedroom, even a studio. A must-see for visitors is the finished basement that lends itself perfectly to becoming a large recreation room with home theater.

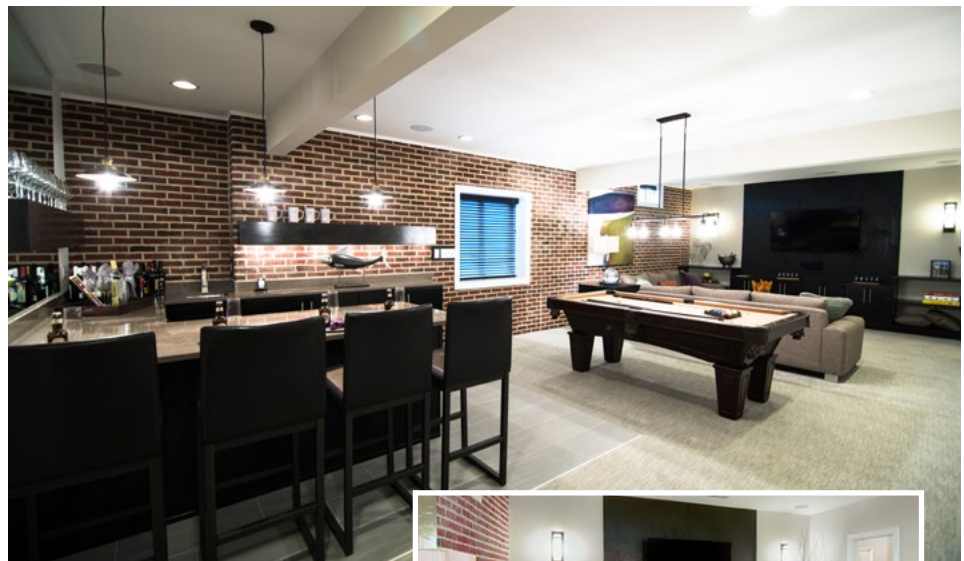
The home, just like The Town of Whitehall, not only evokes the many charms of small-town living, it does so in a thoroughly contemporary way.

The Town of Whitehall is conveniently situated just off Route 1, making for a convenient commute to Wilmington, Philadelphia and South Jersey. It's also in a location that is part of the award-winning Appoquinimink School District.

For more information, call 302-376-8699. For floor plans and construction details, visit [BenchmarkBuilders.com](http://BenchmarkBuilders.com).



Thoroughly modern, open-concept floor plans create a remarkably airy living space.



The optional finished basement with brick accent wall is the perfect space for the family media center and recreation room.



Directions from I-95 South: Exit at DE-1 South. Take Exit 148 toward US-13. Turn left onto Lorewood Grove Rd. At the traffic circle, take the 1st

exit to stay on Lorewood Grove Road.  
GPS: 900 Lorewood Grove Road,  
Middletown, Delaware 19709.

**FOR DETAILS AND FLOORPLANS CLICK HERE**